

# PRESS RELEASE

## CALIFORNIA DEPARTMENT OF PARKS AND RECREATION

Divisions of Boating and Waterways, Historic Preservation and Off-Highway Motor Vehicle Recreation

---

### For Immediate Release

May 30, 2019

### Contact:

[Callan McLaughlin](#)

Supervising Ranger

(916) 307-1657

## South Parking Lot at South Yuba River State Park to Close Temporarily for Bridgeport Covered Bridge Renovation

*Closure Goes into Effect on Wednesday, June 12*

**SOUTH YUBA RIVER, Calif.** — Starting Wednesday, June 12, California State Parks will temporarily close the south parking lot to day-use parking at [South Yuba River State Park](#) while the historic [Bridgeport Covered Bridge](#) is renovated. Originally built in 1862, the bridge was closed to public access after a timber survey in September 2011 revealed significant structural damage. Thanks to the support of the Nevada County community, the Save our Bridge Campaign Committee, and the Legislature, the \$6.9 million restoration project, funded with a combination of state and federal funds, is now underway to make the bridge safe again for pedestrian access. Construction is expected to be completed by April 2020.

Here's what you need to know if you're planning to visit this popular park:

### Parking in the South Lot

- Will be closed due to construction.

### Visitor Center and Restrooms

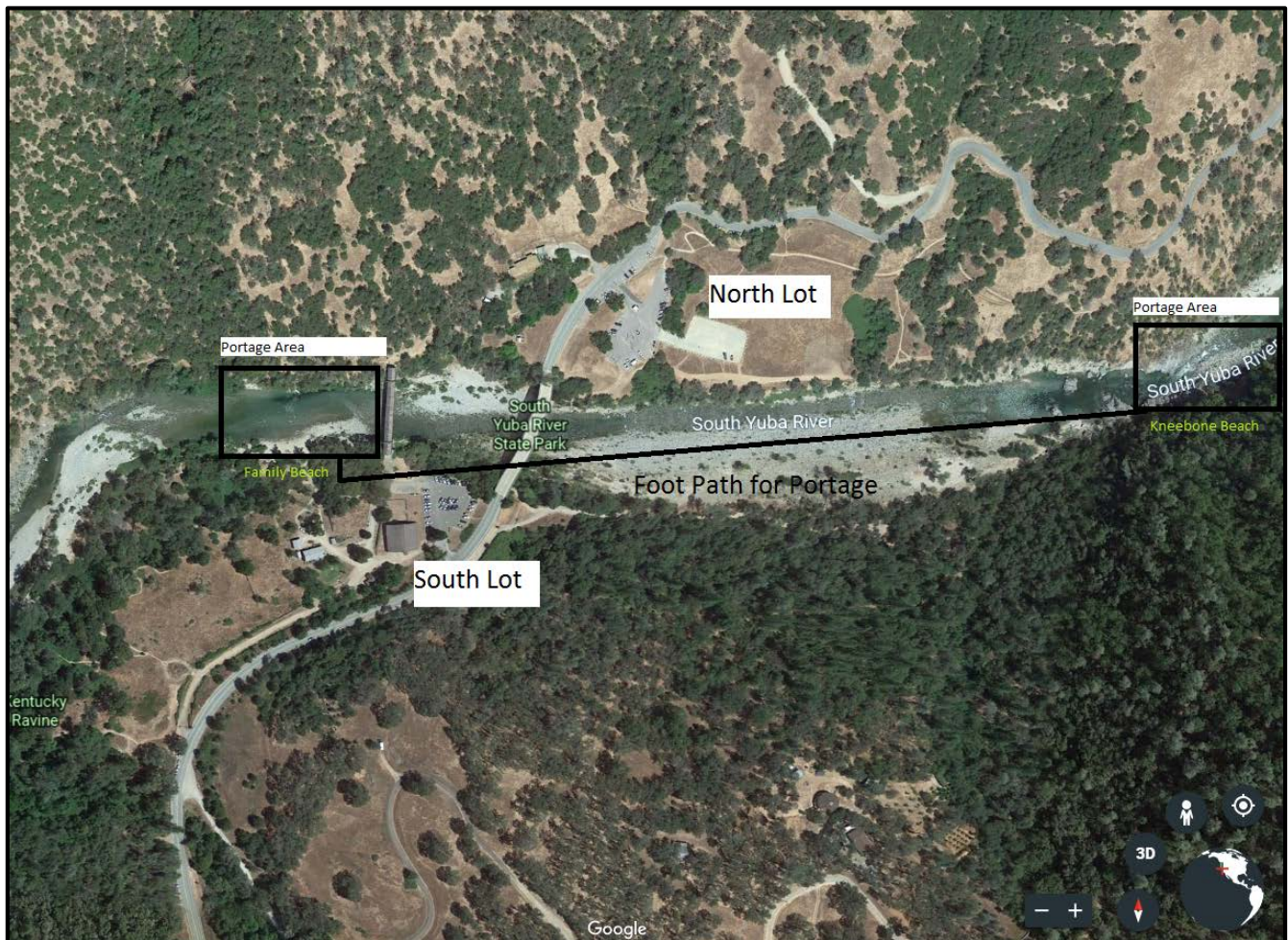
- The visitor center will be open to the public during the renovation, seven days a week from 11 a.m. to 4 p.m.
- The restrooms near the visitor center will also be open during the renovation. Normal park day-use hours will be unaffected.

### Access to Kneebone Beach and Family Beach

- During the renovation, construction crews will be working on and under the bridge. For the public's safety, there will be two portage areas (access points to enter and exit the water) for park aquatic users located at Kneebone Beach and Family Beach.
- Visitors are being asked to use these portage areas instead of traveling down the river and under the potentially hazardous construction area.
- For the park visitor's safety, the area around the bridge will be fenced off and closed. Any park visitor in violation of this will be subject to a citation.

## Additional Tips

- The north parking lot will still be open for visitors.
- Due to the south lot closure, State Parks is encouraging visitors to carpool, rideshare or use the shuttle bus, when available, due to the limited amount of parking available. Thank you for your patience and understanding during the renovation.
- As always, please recreate safely and protect you and your loved ones. Always wear a properly fitted life jacket, even if you're a strong swimmer. The rivers are running dangerously cold and fast due to the large amounts of snow and rain received this year. Be sure to actively supervise children at all times. For more safety tips, click [here](#).



*The south parking lot will be closed during the renovation but the north lot will remain open. Those heading into the river must use the portage areas at Family Beach and Kneebone Beach for their safety. Signs will be posted to direct visitors.*

## About the Bridgeport Covered Bridge

The Bridgeport Covered Bridge at South Yuba River State Park is the only remaining single-span Howe Truss-Burr Arch covered timber bridge of this size in the nation and is listed on the National Register of Historic Structures. It spans 226 feet and is 16 feet wide. Before its closure, it was used by 150,000 visitors each year as a pedestrian bridge across the South

Yuba River in Nevada County, California. For the latest update on the restoration project, please visit [www.parks.ca.gov/BridgeportCoveredBridge](http://www.parks.ca.gov/BridgeportCoveredBridge).

###

**Subscribe** to California State Parks News online at [www.parks.ca.gov/news](http://www.parks.ca.gov/news) or email us at [newsroom@parks.ca.gov](mailto:newsroom@parks.ca.gov).

**California State Parks** provides for the health, inspiration and education of the people of California by helping to preserve the state's extraordinary biological diversity, protecting its most valued natural and cultural resources, and creating opportunities for high-quality outdoor recreation. Learn more at [www.parks.ca.gov](http://www.parks.ca.gov).

[Facebook](#) / [Twitter](#) / [Instagram](#) / [YouTube](#) / [Blog](#) / [Periscope](#) / [Flickr](#)